

Wokingham  
Learning Disability  
Partnership Board

## Minutes from the Partnership Board's **BIG** Meeting Rose Street Methodist Church, Wokingham Tuesday 15<sup>th</sup> June, 2010

### Welcome and Good News!

Luke and David welcomed everyone to today's meeting and asked people to introduce themselves and share some good news. Here's what a few people had to say:



- **David** and **Jason** are enjoying watching the World Cup on TV!
- **Luke** will be changing jobs soon and today is his last meeting, which is sad news - but his good news is that Clive (a member of our Partnership Board who has a learning difficulty) has bought his own home!
- It's **Peter's** birthday today and he had a phone call from his family in New Zealand.
- **Jodie** got married last week and thanked everyone for their good wishes!



- **Irene** will be taking her daughter on holiday soon.
- **Eve** works at the volunteer centre – she recently ran a supported volunteering event which was a big success.
- **Frankie** will be presenting at today's meeting.
- **Michael** played in a football tournament yesterday, and his team won!
- **Mette** is pleased that the Action for Autism Partnership Board met for the first time last week.
- **Maggie** is from the West Berks Partnership Board and has come to our meeting today to see how we run our meetings.
- **Cathy** from ASD Family Help was pleased that over 50 people went to the first Family Social Club held recently - a bowling event in Wokingham.
- **Mary** presented her Epilepsy Project at a national conference recently and it went down very well.
- **Marlena** is pleased with the success of the 2<sup>nd</sup> Choice Champions Course which is coming to an end soon.



Before we moved on to the first agenda item, David had a few words to say to Luke.... Luke has a new job in Dimensions and will be leaving us at the end of the month - we will all be very sorry to see him go. **He has been our Partnership Board co-chair for 18 months and has done a great job.** David thanked Luke for all his hard work and we all wished him lots of good luck in his new job!

## **Putting People First Consultation (Part 2)** **Clive Dove-Dixon and Mette Le Jakobsen**

**Part 1: Social Care Pathway**

**Part 2: Community Care Traded Services**



At our Big Meeting in March, Mette and Matt Pope talked to us about the Council's planned changes to the way they deliver social care to people in the Wokingham Borough. We used people's stories to think about how things might look in the future. Jodie made a note of all our comments from that meeting and sent the feedback to the Council. (If you would like to see the written report, please see Jodie.)

Today's meeting was our opportunity to hear about more of the planned changes. We decided to do this over 2 meetings because there was a lot of information to take in!



Clive is Head of Commercial Development at the Council. His job is to look at the best way for the Council to respond to initiatives such as Putting People First. The Council's own care services need to be run more like a business to keep going as things change. Clive is writing a plan and before he does that, he wants to hear our views and find out what services we think are needed in the future.

### **So what is Community Care Traded Services?**

At the moment, the Council provides lots of different social care services and the idea is to set up a separate company that will provide those services instead. This company would be owned by the Council but would be legally separate, managed separately and have a board that the managers report to.



The company would run the services that the Council already provides for adult care, but it would be able to do trade (sell its services). At the moment, the Council can't sell its services to customers which puts it at a disadvantage. The new company can make money which will be used to improve its services, and possibly offer new services too.



### **Why is the Council doing this?**



It is not possible to carry on in the same way, if things don't change the services may not have a future. Now that people have Personal Budgets and are choosing their own support, they need to know how much these services cost. Up until now, it has been very difficult for the Council to put prices on everything. Setting up a company will make things clearer for everyone. People can use their own money on top of their Personal Budgets if they want to buy more of the

services the company offers. The company will also be able to look for new customers from different areas.

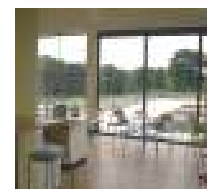
The money from that the company makes will be used to develop new services related to adult care. At the money the council is restricted in what it can do, but the company could do things like provide personal care to people. The company will work hard to understand what customers want, it will be more free to offer individualised (person centred) services. The Council has to make sure people's critical needs are met, so the new company will be able to support people in an emergency or provide a type of service that is not available anywhere else.



### What services are the Council talking about?

There are 19 services across Community Care but the services for people with learning disabilities are:

- Wokingham Borough Employment Services (WBES)
- Oakfield Court
- The Learning Disability Day Service (Wokingham, Earley, Woodley and Growing Places)



\*\*\*\*\*

Next Clive talked about what will be the same with the new company, and what will be different.

### What will stay the same?



- The Council will carry on being responsible for making sure there are services for people – you will not see much difference to start with.
- The Council will carry on being in charge of keeping people safe.
- The rules that the Council has about who gets a service and the amount someone gets for the Personal Budget will stay the same.
- The standard of service that people will get with the new company will be the same or get better!
- People will carry on getting their services whilst these changes take place and hopefully the changeover will be as smooth as possible.
- It hasn't been decided exactly how the new company will contract staff, but the staff will stay the same in the new service.
- The Council wants people to have as much choice and control as possible.
- The Council wants services to stay near to where people live.



### What will be different?

- The Council will not be providing services directly. The services will be provided by the new company which will be owned by the Council.

- People will know how much things cost so that they can buy their services.
- There will be more opportunities to develop new services – for example personal care which was mentioned earlier.
- The new company will have a name and identity so that people know who they are talking to and working with.
- The information about what services the new company can provide for people will be much clearer and will focus on the customer.



### How might it work?

The final decision hasn't been made yet and there is still lots of thinking to do. Clive is working on a business case which has lots of details like how everything will work, what all these changes will cost, and how the new company can be made safe. Clive hopes the business case will be ready by September, and then our politicians will have the final decision.



\*\*\*\*\*

To make it all easier to understand, we looked at 4 different stories.

#### Story 1: John has a personal budget and wants some help to find a job.



WBES will carry on helping people find work. At the moment there are different ways of getting help from WBES – people can either be referred by CTPLD or they can use their Personal Budget to access the service. With the new company this will not change but there will be an extra way John could access support, he could use his own money to buy the service.

#### Story 2: Claire has a Personal Budget but can't find anyone that will run a computer course for someone with complex needs.

As Claire has a Personal Budget she is not bound by what is there. If she can't find what she is looking for she can ask a company to put it on for her. This will help develop new services making it better for everyone. At the moment the Council only has the budget to provide a certain amount of support. The new company will offer Claire much more flexibility.



#### Story 3: Sally has a personal budget and would like to pay extra to get some support at the weekend.

We imagined that Sally lives at Oakfield Court and has a Personal Budget. She gets a certain amount of care but would like extra support to go to a concert at the weekend or go out for a meal. If Sally doesn't have enough money in her Personal Budget for the weekend support, currently, staff at Oakfield Court cannot be paid to do extra. But, in the new company, Oakfield



Court would become a Traded Service and Sally could use her own money to pay for extra support staff at the weekend.

**Story 4: Sam uses the day service already and doesn't want to change anything.** That's fine – nothing needs to change! The services in the new company will carry on in the same way, as long as people want to use them.

\*\*\*\*\*



## Question Time!

Time for Mette and Clive to answer our questions!

What type of company will it be?

It will be a Local Authority Trading Company, limited by guarantee and owned by the Council. Over time it will be able to pay dividends (money it makes) back to the Council, but to begin with the money will need to go back into the company to build it up.

Will the cost of the new company be more than it is at the moment?



There will be extra costs (for example having a board of directors), but there are also costs to running these services now. The Council has looked carefully at how much existing services cost and can now see where there might be savings and better options, plus for the first time the services will be able to make money. These will more than make up for those extra costs.

Has the decision already been made to make these changes, does our say count?



No, the decision hasn't been made yet. The business case will be put to the Executive (local politicians) in September and they will make the decision. The business case will have to include what staff and customers think about the plans. Clive said that the reality is the Council cannot afford to carry on the way they are going. Changes must happen. This is the same for Councils all over the country. Other Councils have "out-sourced" services (which means selling off services) this means the Council does not have any say on how these services are run.

Will the Council still support small voluntary organisations and social enterprises?

Yes the Council will still want to do that, it is not aiming to provide everything. The idea is to offer lots of different services to give people more choice and flexibility.

Will the Council involve customers in the running of the company?  
(This is called a user led organisation)

The first thing is to get the company set up. In the long run we will want to involve customers and staff. We need to make sure there is a process (way) in place to do this well. Getting feedback from customers is a very important part of running a good company.



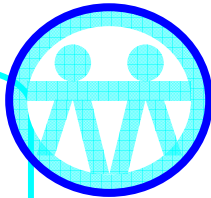
What are other councils in the West of Berkshire doing?

There are currently 10 councils across the country who are thinking about this model and Essex has already done it. Neighbouring councils are interested in what we are doing. We would be happy to work with Reading or West Berks Council if they wanted to do something similar.

If someone wanted a service like transport but the company didn't provide that service, could the person ask for it?

Yes the company would be free to offer this. The company will need to offer services that people want to use .

Where will our Partnership Board sit in the new structure?



Members want the Partnership Board, and the Council wants it to continue. Funding for the Partnership Board like many other things is uncertain at the moment. However, the Council remains responsible for partnerships (people and groups working together). The new company may wish to join the Partnership Board.

How will it affect the Learning Disability Team?

An important function of social services is brokerage (helping people plan) and long term support. This might sit better with the traded services (i.e move into the new company). The job of assessment and review will stay as part of the Council.

At the moment, my brother pays the Council for some of his support. Who will he pay in future?



The rules around "fairer charging" will stay the same. So if you are assessed now to pay for part of your care, then that will stay the same. If the trading company is providing the service then the money would go to the company, but we still need to work out how the money is collected.

What will happen to the existing services?  
Will they be re-tendered, giving other organisations a chance to bid for the contract?

The Council is not allowed to be “anti-competitive”, so any contracts would be given out fairly and follow certain rules. What would make the company different from other organisations is that it would be a 'provider of last resort' this means if nothing else is available the company will provide what is missing.



Will the Prevention Service still be able to provide support to people who do not have Personal Budgets ?

Prevention services will continue but will only be available for the people who need it most. There are no plans to move Learning Disability Prevention Services into the new company. This will be tendered for (organisations can apply to run the service).

My daughter is very happy with the service she gets from Dimensions.  
Will this service change?

She can still choose to buy her service from Dimensions.

\*\*\*\*\*

Then Clive asked us some questions, and this is what we thought:

1. **What is good about these services now?** Consistency. It's good to have the same staff and support in the same places.
2. **What doesn't work?** The current system is confusing – for example where people can go for brokerage (help to support plan) and what services are available. Hopefully the new system will make things much clearer.
3. **What is missing? What could we develop?**
  - i. We could focus on further education (opportunities for learning new things)
  - ii. Choice to use services in different areas
  - iii. More opportunities to meet new people/have relationships



\*\*\*\*\*

**So what happens now?**

A number of consultation meetings (like the one today) have been planned so that everyone has a chance to say what they think. The day service will be running events on Thursday 24th June at 5pm



(Crescent Centre) and Friday 25th June at 10am (Acorn Centre) to tell people about these plans.



In September, the Council's Executive will look at the plans and make a decision. If they agree, [the new company could start on 31st March 2011](#).

## [Self Advocate Workshop - Jason Archer and Frankie Brewer](#)

Sarah, Jason and Frankie came to tell us what happened at the recent Self Advocate Workshop about [Healthy Lifestyles!](#)

Jason and Frankie told us about the icebreaker where everyone introduced themselves and talked about their favourite fruit and vegetables. They talked about what people can do to lead a healthy lifestyle - things like healthy eating and exercise. Then they thought about keeping minds healthy too by getting lots of sleep and having fun with friends. And also having regular health checks at the doctors and opticians – and by not smoking and drinking lots of alcohol!



Jason and Frankie said they talked about the different groups at Prevention Services which help people live a healthier life:

- There is a [Community Life Group](#) on Thursdays where they talk about things like relationships, alcohol awareness and stress management.
- There is a [Cooking Group](#) on Mondays where they talk about healthy eating, understanding labels and practice cooking skills.
- Peter talked about the [Community Allotments](#) at Oakfield Court and what fruit and vegetables are grown there, and when people can get support to work on the allotments.
- They also talked about the [Rose Buddies Exercise Club](#) on a Monday, and the [Fun Fit Club](#) on a Wednesday. At the workshop Amy demonstrated some of the gentle exercises that can be done sitting in a chair or a wheelchair, using items from around the home like a tin of soup as a weight.



Then Frankie talked about the mini gardening that everyone did – which was how to plant and grow cress from seeds in plastic cups! Everyone at the workshop had a go and took the cups home so that they could have cress sandwiches in a few weeks' time!

David finished the workshop by letting everyone know that the new look Health Action Plans are nearly ready. Mary has worked with members of CLASP to make them easier to read, copies will be available soon.



## Learning Disability Development Fund (LDDF) – Jodie Newman



Jodie gave us an update on the Learning Disability Development Fund (LDDF). We had around £87,000 to spend for the current financial year, which is 1<sup>st</sup> April 2010 to 31<sup>st</sup> March 2011. The plan was to use some money for Partnership Board running costs – which is things like office space, printing, holding meetings etc. We wanted to use some money to pay for an Inclusion Worker, and we agreed to give CLASP the money to employ this person.

The rest we planned to make available for local projects and groups to use. On 28<sup>th</sup> May, the Core Group held a Bidding Round and heard from 19 different bids, and the panel decided which groups would get some LDDF money.

However, since then, the new government have been busy working on ways to save money to get the British economy back on track. Councils across the country have to take a look at the money they are spending and they will be told to make savings. As part of this, Wokingham Council is reviewing how it gives out money to different groups (this is called grant funding). For now the LDDF is suspended (on hold). We do not know whether we will get any LDDF money this year. In the meantime, we have had to put a hold on any projects that needed LDDF money to run.



Jodie has written a letter to all of the successful applicants to tell them what is happening. We can only give them the money if it is made available to us.

We will update everyone as soon as we have more information.

---

## Choice Champions – Marlena O'Donnell, Tim Murgatroyd, Leilah Zaheer, Philip Pearce

A training course was set up earlier this year, to give 9 people who have personal budgets mentoring and leadership skills. These people, called “Choice Champions”, were trained to talk to others about personal budgets – for example, what it is like to choose your own support.

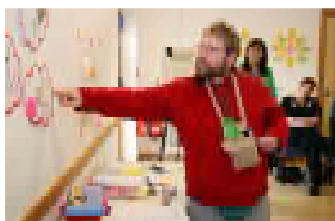


### What did they learn?

- They learned how to be a good mentor (show someone what it is like to have a personal budget).
- They learned how to feel and look confident, and how to make others feel confident.



- They learned how to ask the right questions, and how listen properly.
- They learned about body language.
- They learned what you can and can't do with personal budgets.
- They talked about their own experiences.



- They learned about confidentiality and how important it is not to gossip. But they also learned that if someone isn't safe, who they should tell.
- They thought about who were good leaders – people like the Queen, Nelson Mandela and Stuart Rowbotham! – and the skills people need to be a good leader!

The 2<sup>nd</sup> Choice Champions course is running at the moment and will be finishing soon. Marlena will give people at the Council a list of the Choice Champions so that people who are thinking about taking a Personal Budget can go to them to ask for advice and get an idea what it is like.

Marlena and the Choice Champions are planning to go to various events to spread the word! Watch this space for news about a mentoring scheme too!

## Anything Else?

1. **New Co-Chair:** We need to find someone to replace Luke and work alongside David for the last 18 months of the term. If you are interested, please speak to Jodie. We will hold an election at our next Big Meeting on **Wednesday 21<sup>st</sup> July**.
2. **CLASP AGM – Friday 9<sup>th</sup> July:** CLASP's AGM will be from 10am-2pm at the Bradbury Centre. They will be looking for new Directors as some of the current Directors will be stepping down. Please let CLASP know if you would like to attend the AGM, and also if you would like to put yourself forward as a Director. You can ring the CLASP office on tel: 0118 979 6364 or email: [clasp24@aol.com](mailto:clasp24@aol.com)
3. **Party to celebrate the life of Sarah Pask:** Ann and her family are organising a party in memory of Sarah Pask who sadly passed away last year. They will be having a party on **Monday 21<sup>st</sup> June**, 7-10pm, at the Cantley Lodge Hotel. See Jodie or Jennie for more details.
4. **Royal Berks Hospital:** Jane Wooldridge will be off work for a few months but will let us know who the contact person will be in her place.
5. **Autism Alert Card:** The Autism Alert Card was launched last week. It is for people with autism to show when they are out and about and find themselves in difficulty. The card explains what autism is and has the person's contact details. Reading Buses



will be giving all their drivers leaflets about the cards and tips about how to support someone with autism. Cathy has lots of leaflets available if people would like to take them away.



That was the end of the meeting.

**The next Big Meeting will be on...**

**Date:** Wednesday 21<sup>st</sup> July  
**Time:** 10am-12noon  
**Where:** Rose Street Methodist Church, Wokingham

